

No. 54, Anand Tower, Bowring Hospital Road, Shivaji Nagar, Bengaluru - 560001
www.neubergdigipath.com

THE FUTURE IS DIGITAL PATHOLOGY.
DESIGNED BY PATHOLOGISTS FOR PATHOLOGISTS.



**IT'S NOT CUTTING EDGE
IF IT'S NOT DIGITAL.**

Just like people are ready to invest in expensive gadgets, but tend to neglect their health; most diagnostic units continue to invest in expensive technology, while still relying on conventional pathology to deliver critical results that could save precious lives.

In addition to reducing the time taken for diagnosis, digital pathology also improves the accuracy of results and enables archiving and sharing of data with greater convenience.



WITH DIGITAL PATHOLOGY, PATHOLOGISTS WILL:

- Save time rather than struggling to locate boxes with heap of tissue slides
- Invest less time focusing microscopes
- Save their money by sharing digital tissue images with experts and consultants for second opinion

Undoubtedly the future of pathology is going to be digital.

**THE DIFFERENCE IS DIGITAL.
THE RESULTS ARE PIVOTAL.**



WITH OUR ADVANCED DIGITAL PATHOLOGY SOLUTIONS YOU GET:

- Small footprint, cloud enabled scanning system
- Easy acquisition, viewing, analysis and management of digital slides
- Access to a large pool of Histopathologists from India, UAE, South Africa, Japan, Finland, Germany and USA
- A rich digital library
- Digital Learning for pathologists made easy
- Uberisation of pathology services
- Best of the world second opinion services now available

EXPERIENCE THE ADVANTAGE OF ON DEMAND DIGITAL PATHOLOGY

CUTTING-EDGE DIGITAL PATHOLOGY MADE AVAILABLE TO ALL LABS WITH:

- OptraSCAN's 15-slide Brightfield Digital Pathology Scanner
- OptraSCAN's Image Management tools
- OptraSCAN's Telepathology Software platform and second Opinion Services through a teleportal to be launched with NeubergDigiPath.com
- Neuberg's own Histopathology Network based in India / Middle East & Africa
- Enrolling world class histopathologists for second Opinion Services through a TelePath Site called NeubergDigiPath.com
- Cost Effective Neutral digitization services for all healthcare institutions and patients in all key locations where Neuberg network is present
- Digital Sharing & Learning platform for practicing Pathologists & Pathology Students using Data Analytics, Artificial Intelligence Tools & Digital Slide Library



TWO INTERNATIONAL BRANDS. ONE UNITED VISION

Neuberg and OptraScan have very different operating markets but share a common vision to make life-saving, advanced healthcare technology available to the common man.

NEUBERG

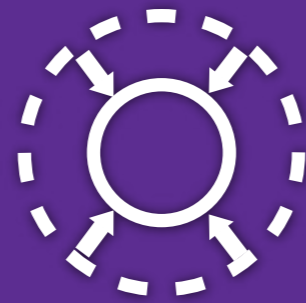
Neuberg has a presence in Tamil Nadu, Karnataka, Kerala, Telangana, Gujarat in India and Middle East and South Africa.

- A Total of 33 Labs: 26 labs in India, 7 labs outside India
- 200+ years of combined group experience
- Catering to 5000+ labs and hospitals in India
- Processing 4 million samples and 16 million tests per annum
- 450 crores turnover company
- 4th largest diagnostic chain in India
- 2000+ employees
- 3 Reference Laboratories- Genomics Reference Center, Virology, Reference Centre within the group
- Focus on Next Gen Technologies
- Services - Lab Services, Wellness, Home Health Services, Drive in Services.

OPTRASCAN

- Focused on delivering fully integrated, cloud-based affordable desktop scanning systems & solutions
- Developed world's first 'On-Demand Digital Pathology' system
- Global providers of digital scanners that are well-equipped for confocal, brightfield, fluorescence & frozen sections applications
- Strong foothold in AI & ML based automated algorithms used for cancer biomarkers
- Corporate Office: San Jose, CA | Development centre: Pune, India
- An ISO 13485 certified company
- Whole slide scanners are CE marked for In-Vitro Directive use
- Medical Advisory Board include distinguished pathology experts from prestigious institutions such as Duke University, Stanford University, University of California, Yale University, etc.

SMART FEATURES



Comprehensive package for effective acquisition, viewing, analysis and management of digital slides and associated metadata.

CLOUD READY

Instant cloud loading capacity and seamless integration with Companion software

COMPACT SIZE

Compact size with small footprint W-12", L-16", H-12" Weight - 60lbs

ECO PRICE

Economically priced, and subscription-based model for instant cost-savings

HIGH RESOLUTION

Objective lens: 0.5 micron/pixel at 20x magnification and 0.25 micron/pixel at 40x

WALK AWAY TECH

Robust, user-friendly and reliable automation for hassle-free scanning

SMART RECOGNITION

Bar code recognition and case reconciliation
Capability to scan multiple AOR's

OUR PRODUCTS



SMALL FOOTPRINT BIG ADVANTAGE

- Small footprint, cloud-enabled desktop scanner
- Capacity of 15 and 120 – slide scanning
- 20X and 40X magnification
- Able to batch run indefinitely w/ 8-cartridge carousel

OUR SERVICES

- Digitization Services
- Storage and Archival Services
- Slide discussion & Digital Learning Modules
- Automated slide processing platforms
- Second opinion tele consulting services

OUR TECHNOLOGY TOOLS (OptraSCAN IMAGEPATH®)

Web-based ImageManagement and Viewing

- Image sharing, collaboration and storage security
- Pan, zoom, annotate, generate reports
- User authentication and “role-enabled” access
- Image analysis plugin available

GLOBAL TELEPATH® SOLUTION (KEY FEATURES)

- Real-time sharing/collaboration
- Interactive chat
- Audit trail functionality
- iOS and Android based applications Solution Offerings
- High resolution digitization of pathology slides
- Pay-Per-Use telepathology
- Scalable storage on private cloud up to 100TB

OptraSCAN TELEPATH™ (WEB AND MOBILE DIGITAL CONFERENCING)

- Real-time sharing/collaboration
- Interactive Chat
- Audit trail functionality
- iOS and Android based applications

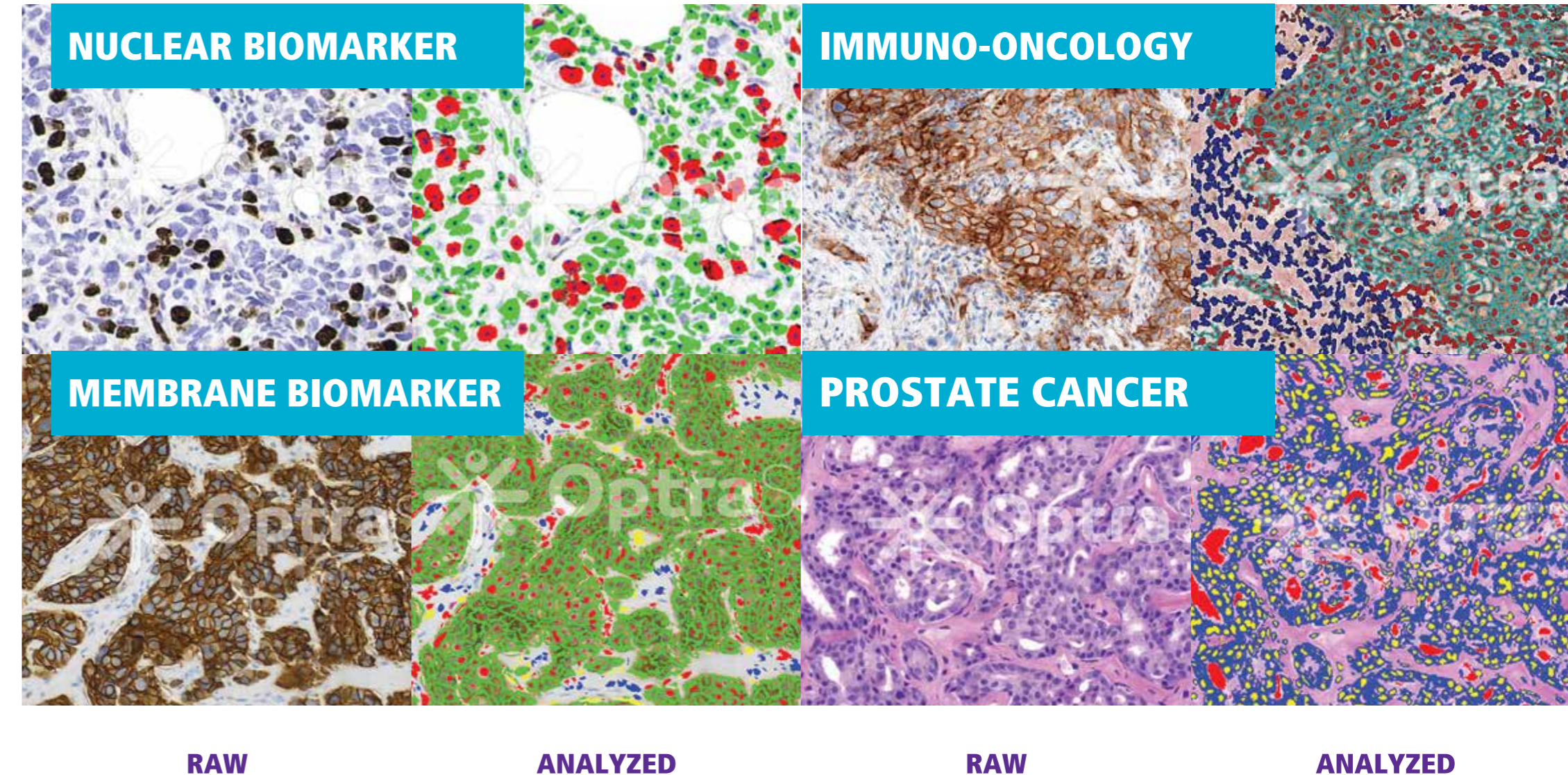
OptraSCAN CLOUDPATH® (LABORATORY INFORMATION MANAGEMENT SYSTEM)

- Built on Salesforce HIPAA compliant Health cloud
- No hardware / software purchase
- No IT assistance required
- Interface with 3rd party applications

OPTRASCAN OPTRAASSAYS™ (ON-DEMAND IMAGE ANALYSIS)

- Bio marker quantification (nuclear, membrane, cytoplasmic)
- ER, PR, Her2neu, Ki67, PD-L1 and FISH
- Tumor area, DNA ploidy, TMA, morphometry, lumen, identification, z-stacking and more
- Single and batch processing

OUR AI BASED AUTOMATED SOLUTIONS



OUR NETWORK



Taking the future to cities and countries where it is needed the most.

- Phase-1: Launch in Bangalore, Ahmedabad, Chennai, Dubai, and Durban (South Africa)
- Phase-2: Extend our reach in the East Asia, Europe & Rest of Africa
- Make the on-demand facility available to leading hospitals taking overall healthcare into the digital age